

# LABGARD®



## NU-430/435 CLASS II, TYPE B2 BIOLOGICAL SAFETY CABINETS



Best Products. Best Performance. Best Protection.

**LBI** Laboratory Builders, Inc.  
*Building labs that shape the future*  
labbuildersinc.com

Greg Ginger  
*President*

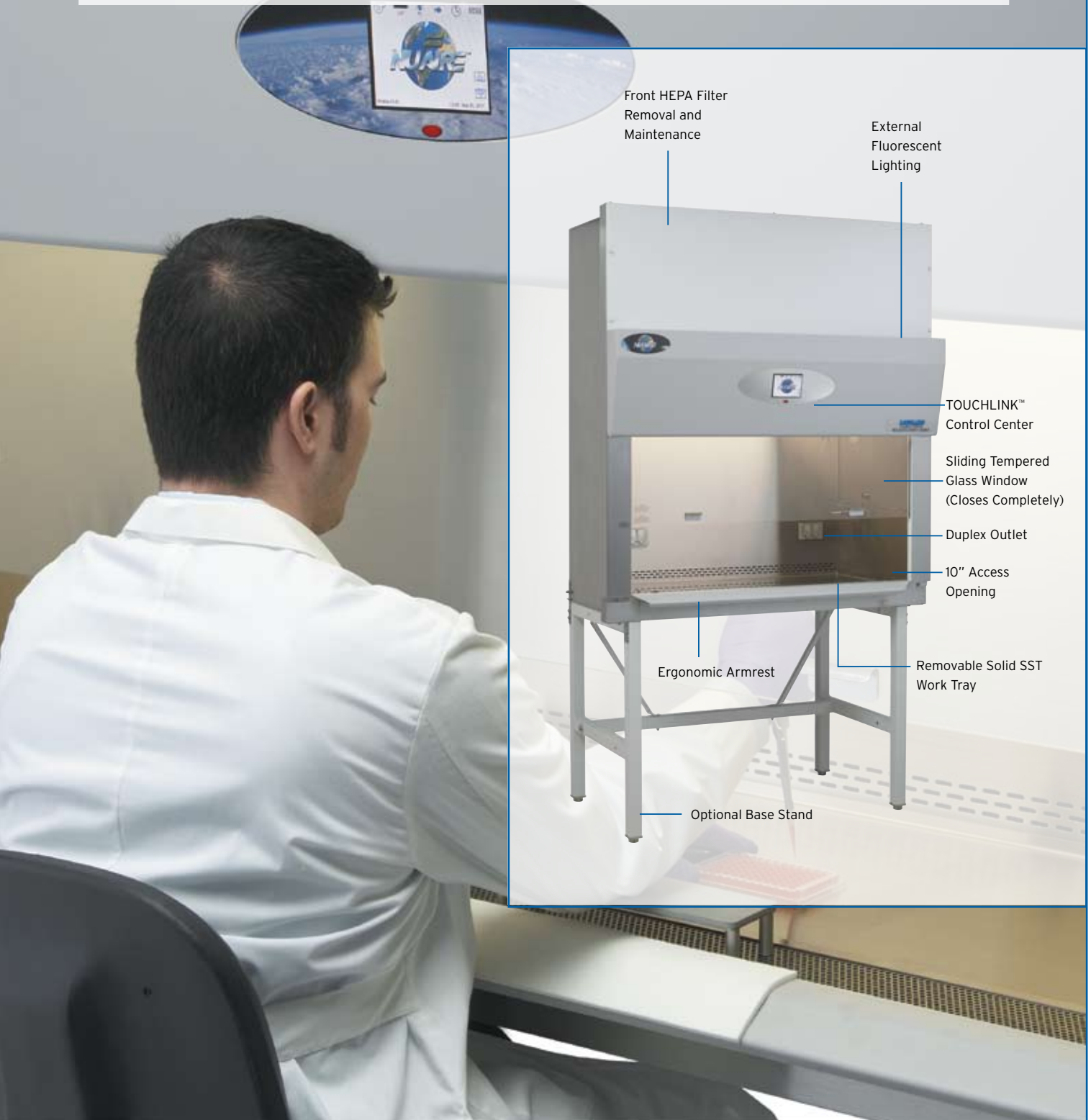


National Direct Accounts Dealer for Jamestown Metal Products

5641 S Cass Ave  
Westmont, IL 60559

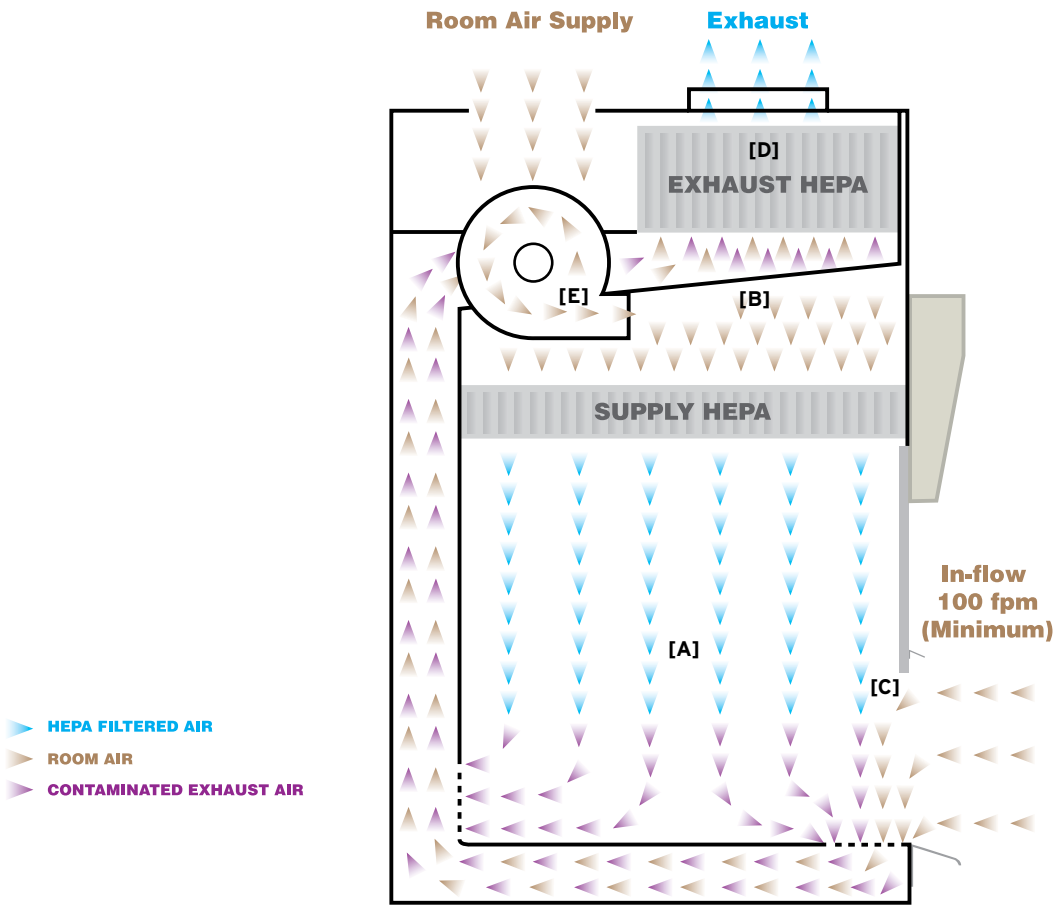
Office 630 598-0216  
Fax 630 598-0218  
Cell 630 235-5292  
gginger@builalab.com

LabGard® Class II Type B2 Biological Safety Cabinets feature downflow air drawn from within the laboratory or outside air. No downflow air is drawn from the cabinet exhaust air. All downflow and inflow air is exhausted through a HEPA filter without recirculation within the cabinet. All contaminated ducts and plenums are maintained at negative pressure. The LabGard® Class II Type B2 Biological Safety Cabinet may be used for work with volatile toxic chemicals and radionuclides as required as adjuncts to microbiological studies.



# Improved Principles of Biological Safety Cabinet Design

## Class II, Type B2 Air In-flow 100% Exhausted



### True Laminar Airflow [A]

Unidirectional airflow moving along parallel flow lines at a constant velocity minimizes air turbulence within the work zone.

### HEPEX™ Zero Leak Airflow System [B]

The HEPEX™ Zero Leak Airflow System eliminates the possibility of cabinet and gasket leaks.

### Greater Volume of Air Creates a Stronger Air Barrier [C]

Air exchanges within the Class II Type A2 Biological Safety Cabinet occur 25 times per minute.

### Larger, Long Lasting HEPA Filters [D]

NuAire® utilizes HEPA filters that are typically 25% larger than those in competitive products.

### Motor/Blower System Extends HEPA Filter Life [E]

As the HEPA filter loads the motor/blower system automatically compensates to assure performance and extended filter life.

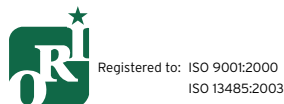
### Single Piece Stainless Steel Construction

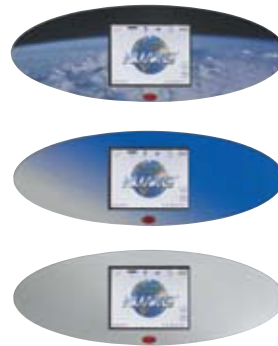
### Centrally Located Control Center

### State-of-the-Art Electronic Safety System

### Improved Quality, Reduced Noise

### Biological Tolerance Testing Assures Optimal Performance





## NU-430/435 (Class II Type B2)

The TOUCHLINK™ is an easy-to-use touch screen LCD which will operate and display all system functions. On / off functions for fluorescent and germicidal ultraviolet lights, blower motor, and interior outlets. Monitors high / low limits for downflow, inflow, and sliding window position. The password protected TOUCHLINK™ also contains a unique date/clock display and timer function which can be used as a laboratory timer, to set purge cycles, outlet timer, UV light timer, auto-run timer, night setback, or weekend turn-off. The TOUCHLINK™ also contains diagnostic functions for a NSF trained service technician or certifier.

## LABGARD® NU-430/435 Class II, Type B2 Biological Safety Cabinet

### Standard Features

- Personnel, Product, and Environmental Protection
- True Laminar Airflow
- 100% Exhaust
- HEPEX™ Zero Leak Airflow System
- Large HEPA Filters: 99.99% Efficiency Rating
- Metal Diffuser over Supply Filter
- Removable Control Center
- Spill Trough with Drain Valve
- 100% Stainless Steel Sealed Construction
- Minimum Air Turbulence
- 100 LFPM Air Barrier
- Sliding Window with 8" Work Access Opening Window is in Vertical Position, Minimizing Glare and Allows for Ergonomically Correct Posture
- Frameless Polished Edge Window, 18 1/2" Maximum Opening
- Removable Work Tray
- External Non-Glare Fluorescent Lighting
- One Electrical Duplex Outlets (Front Left Faring)
- Two Gas Service Petcock (Right Side Wall)
- Decorative Side Panels [NU-435 Only]

- Ergonomic PVC Armrest
- NSF Standard 49 and cUL Approved

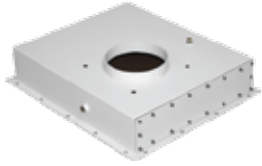
### Optional Features and Accessories

- Germicidal Ultraviolet Lamp [NU-430 Only]
- Prop-Up Removable Work Tray
- Ground Fault Interrupter
- IV Bar with Six (6) Hooks
- Base Support Stand
- Footrest
- Elbow Rest
- Additional Service Valves for Gas, Air, or Vacuum
- Storage Pull-Out Trays
- Alarm Systems [exhaust]
- Adjustable Control for Support Stand or Storage Cabinet
- Decorative Side Panels [option for NU-430]
- Sinks with Hot / Cold or DI Water Faucets
- Heated Work Surface
- Seismic Studs and Brackets
- Remote Controlled Service Valves
- Bag-In / Bag-Out HEPA Filters

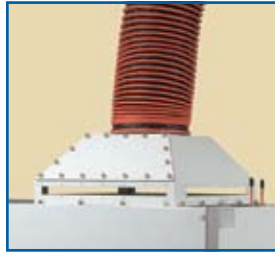
Model	Size (Nominal)	Electrical (All Sizes)	Interior Dimensions (W x H x D) in. [ mm ]	Exterior Dimensions (W x H x D) in. [ mm ]
NU-430-300	3 ft.	115 VAC / 60 Hz	34 <sup>3</sup> / <sub>8</sub> x 25 <sup>1</sup> / <sub>2</sub> x 23 <sup>1</sup> / <sub>2</sub> [ 873 x 648 x 597 ]	37 <sup>5</sup> / <sub>8</sub> x 61 x 32 <sup>7</sup> / <sub>8</sub> [ 956 x 1550 x 835 ]
NU-430-400	4 ft.	E: 230 VAC / 50 Hz	46 <sup>3</sup> / <sub>8</sub> x 25 <sup>1</sup> / <sub>2</sub> x 23 <sup>1</sup> / <sub>2</sub> [ 1178 x 648 x 597 ]	53 <sup>5</sup> / <sub>8</sub> x 61 x 32 <sup>7</sup> / <sub>8</sub> [ 1362 x 1550 x 835 ]
NU-435-400	4 ft.	G: 220 VAC / 60 Hz	46 <sup>3</sup> / <sub>8</sub> x 25 <sup>1</sup> / <sub>2</sub> x 23 <sup>1</sup> / <sub>2</sub> [ 1178 x 648 x 597 ]	53 <sup>5</sup> / <sub>8</sub> x 61 x 32 <sup>7</sup> / <sub>8</sub> [ 1362 x 1550 x 835 ]
NU-430-600	6 ft.		70 <sup>3</sup> / <sub>8</sub> x 25 <sup>1</sup> / <sub>2</sub> x 23 <sup>1</sup> / <sub>2</sub> [ 1788 x 648 x 597 ]	77 <sup>5</sup> / <sub>8</sub> x 61 x 32 <sup>7</sup> / <sub>8</sub> [ 1972 x 1550 x 835 ]
NU435-600	6 ft.		70 <sup>3</sup> / <sub>8</sub> x 25 <sup>1</sup> / <sub>2</sub> x 23 <sup>1</sup> / <sub>2</sub> [ 1788 x 648 x 597 ]	77 <sup>5</sup> / <sub>8</sub> x 61 x 32 <sup>7</sup> / <sub>8</sub> [ 1972 x 1550 x 835 ]



## Options and Accessories



Gas Tight / Low Profile Exhaust Transition



Canopy Exhaust Transition and Flex Duct



Butterfly Valves



203 mm to 254 mm Round Transition



Neoprene Connection Kit



Exhaust Airflow Monitors



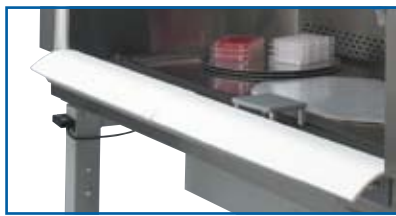
Elbow Rest



IV Bar With Hooks



Remote Controlled Service Valves



Foam Armrest Pad



Stainless Steel Turntable



Adjustable Footrest



Motorized Adjustable Base Stand



Base Stand with Storage Cabinet

**Also Available:**  
 Ultraviolet Germicidal Lamps  
 Faucets and Sinks, Cup Sinks  
 Pre-Piped Plumbing  
 Ground Fault Interrupter  
 Side Panels

Seismic Brackets  
 Metal Frame HEPA Filter  
 Microscope Window  
 Heated Work Surface  
 Custom Configurations



**LBI** Laboratory Builders, Inc.  
*Building labs that shape the future*  
labbuildersinc.com

**Greg Ginger**  
*President*



National Direct Accounts Dealer for Jamestown Metal Products

5641 S Cass Ave  
Westmont, IL 60559

Office 630 598-0216  
Fax 630 598-0218  
Cell 630 235-5292  
[gginger@builDalab.com](mailto:gginger@builDalab.com)